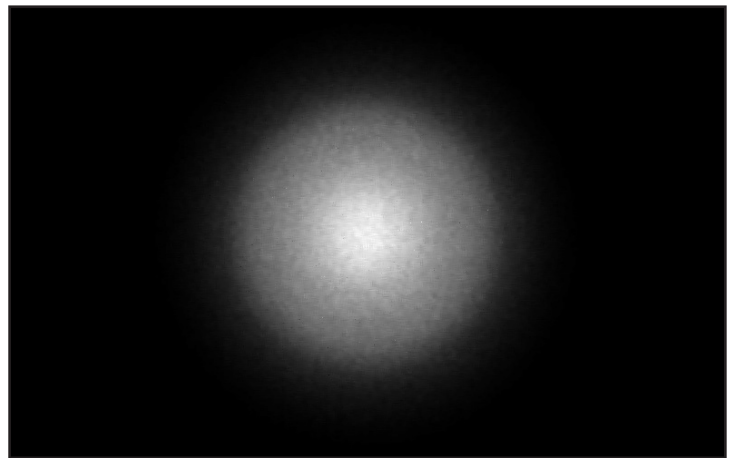
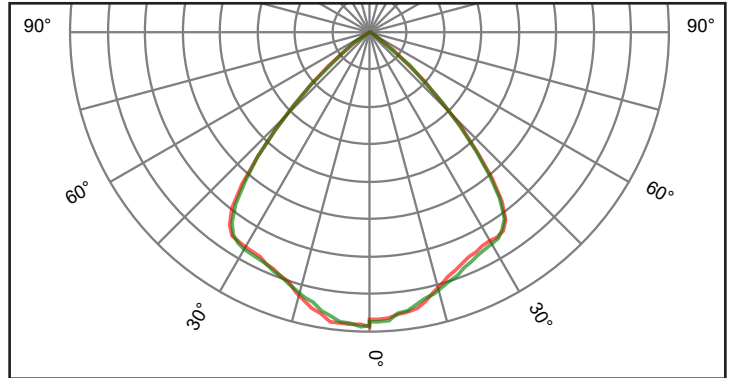
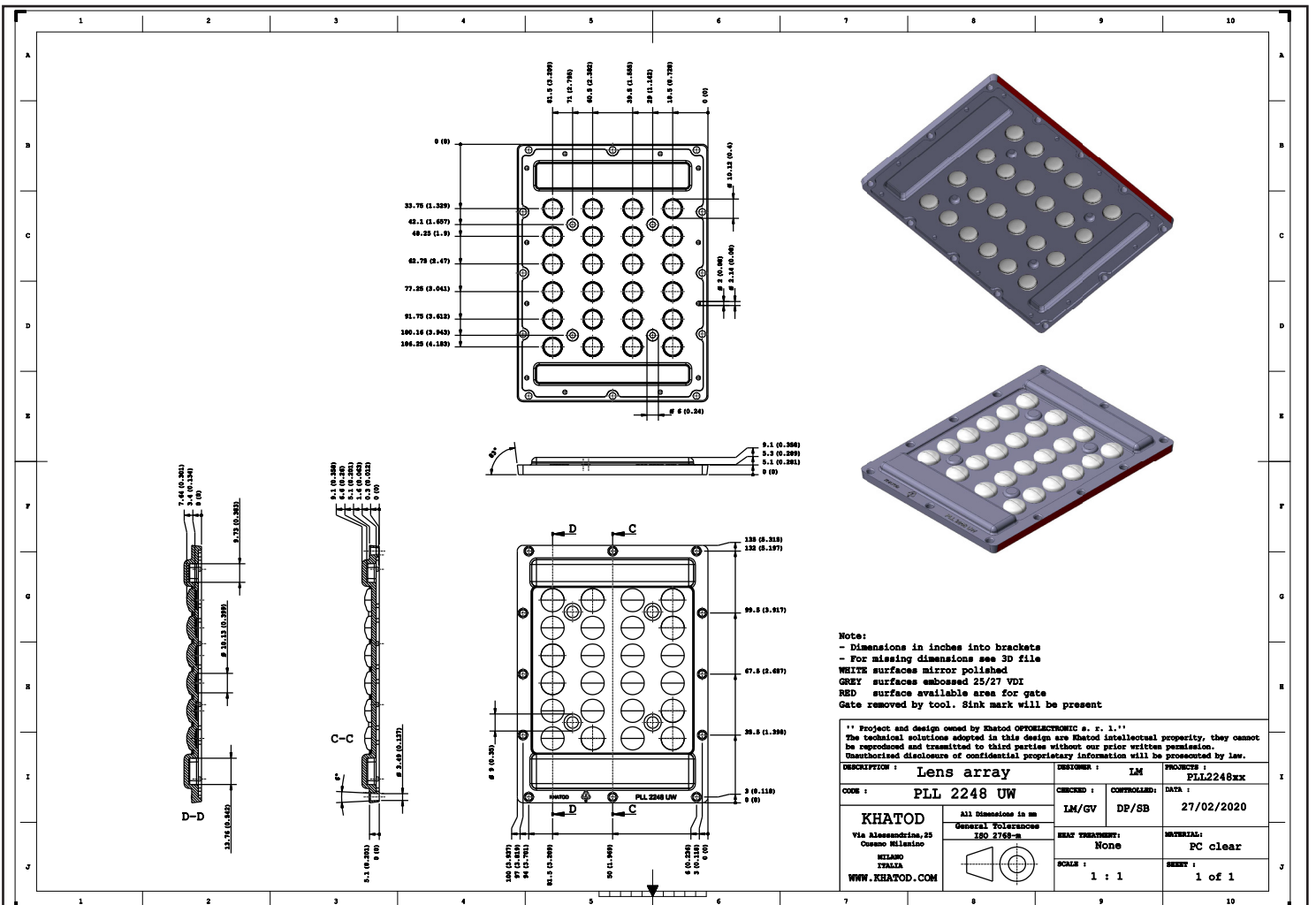


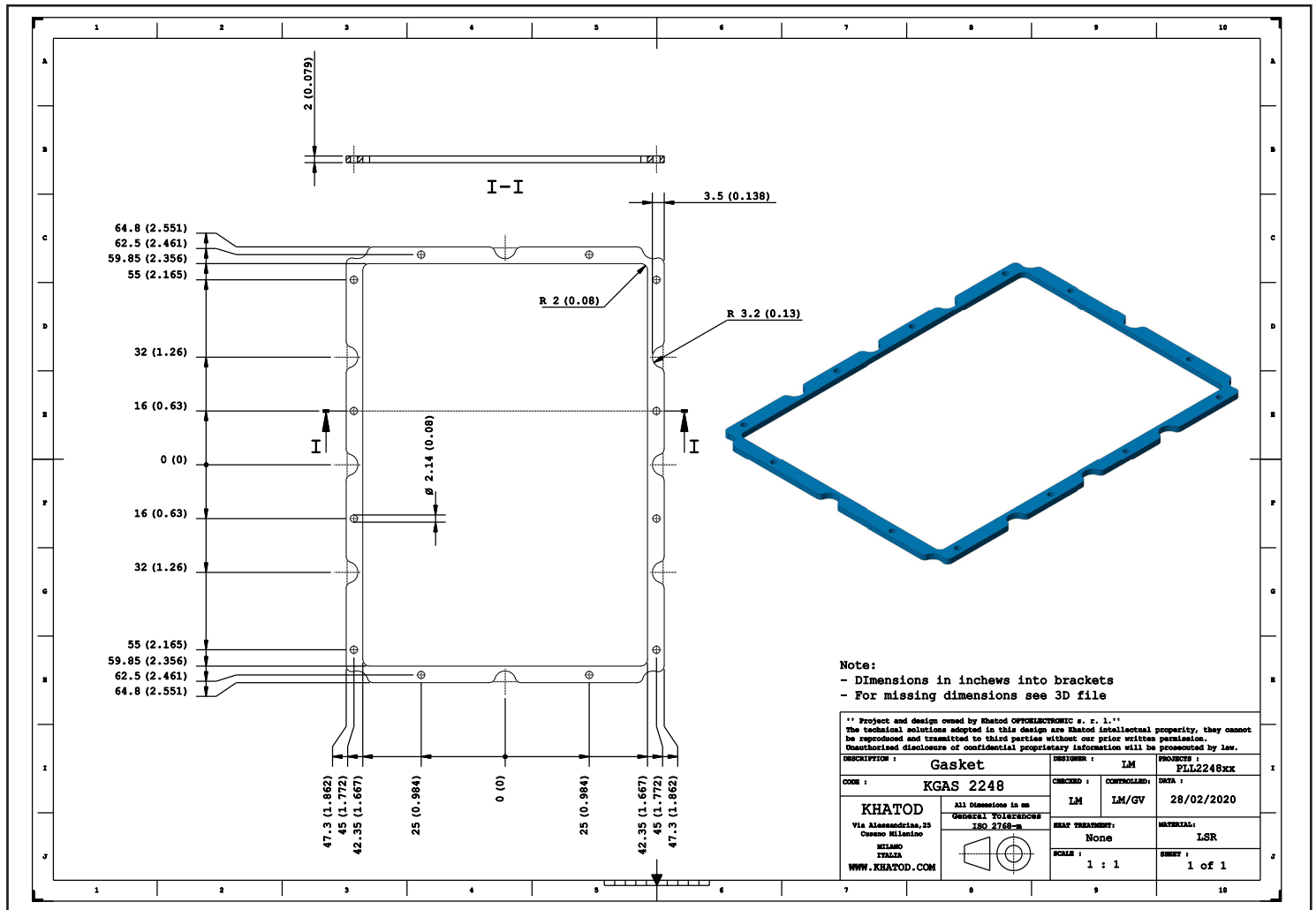
PLL2248UW - Ultra Wide Beam



- Material = PC
- Full angle at 50% from maximum: ~ 85°
- Full angle at 10% from maximum: ~ 105°
- The light spots here represented refer to tests carried out with 24 LEDs 5.0x5.0mm , and ~ 14760 Lumen



KGAS2248 - Gasket for PLL2248xx, made of silicone



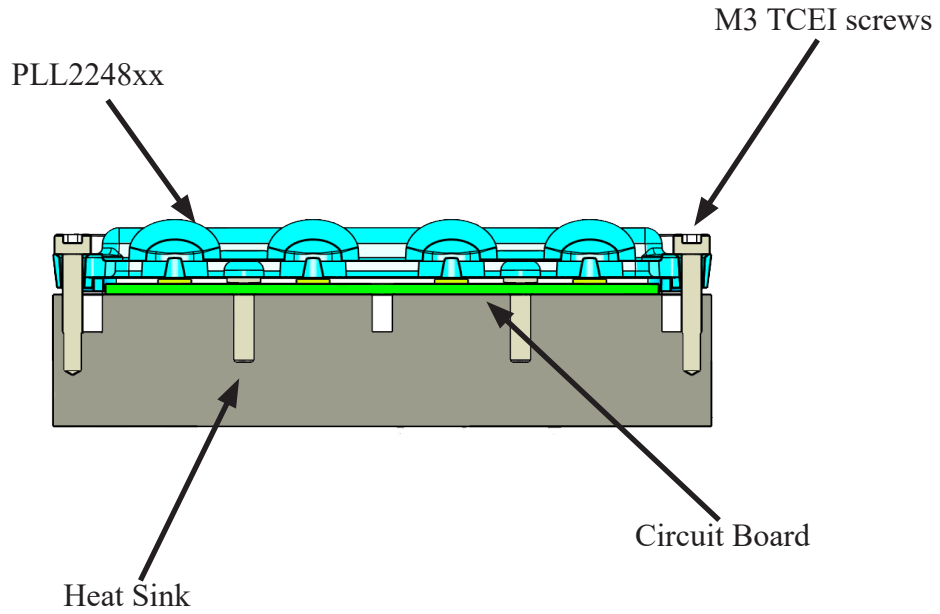
KGAS2248 - Physical Characteristics

| | | |
|-------------------------|------------------------------|---------------------------|
| Hardness sh A : 65 +/-5 | Color : Transparent | Abbrev. : SIL 65H TRASP |
| Basic Element : VMQ | Vulcanization: 10min @ 150°C | Annealing : 4 hours@200°C |

| Original Parameters | Unit of Measurement | Detected Values | Test Method |
|---------------------|---------------------|-----------------|-------------|
| Hardness | Shore A | 65 | ASTM D 2240 |
| Hardness | IRHD | | |
| 100% Modulus | MPa | | ASTM D 412 |
| 100% Modulus | N/mm ² | | |

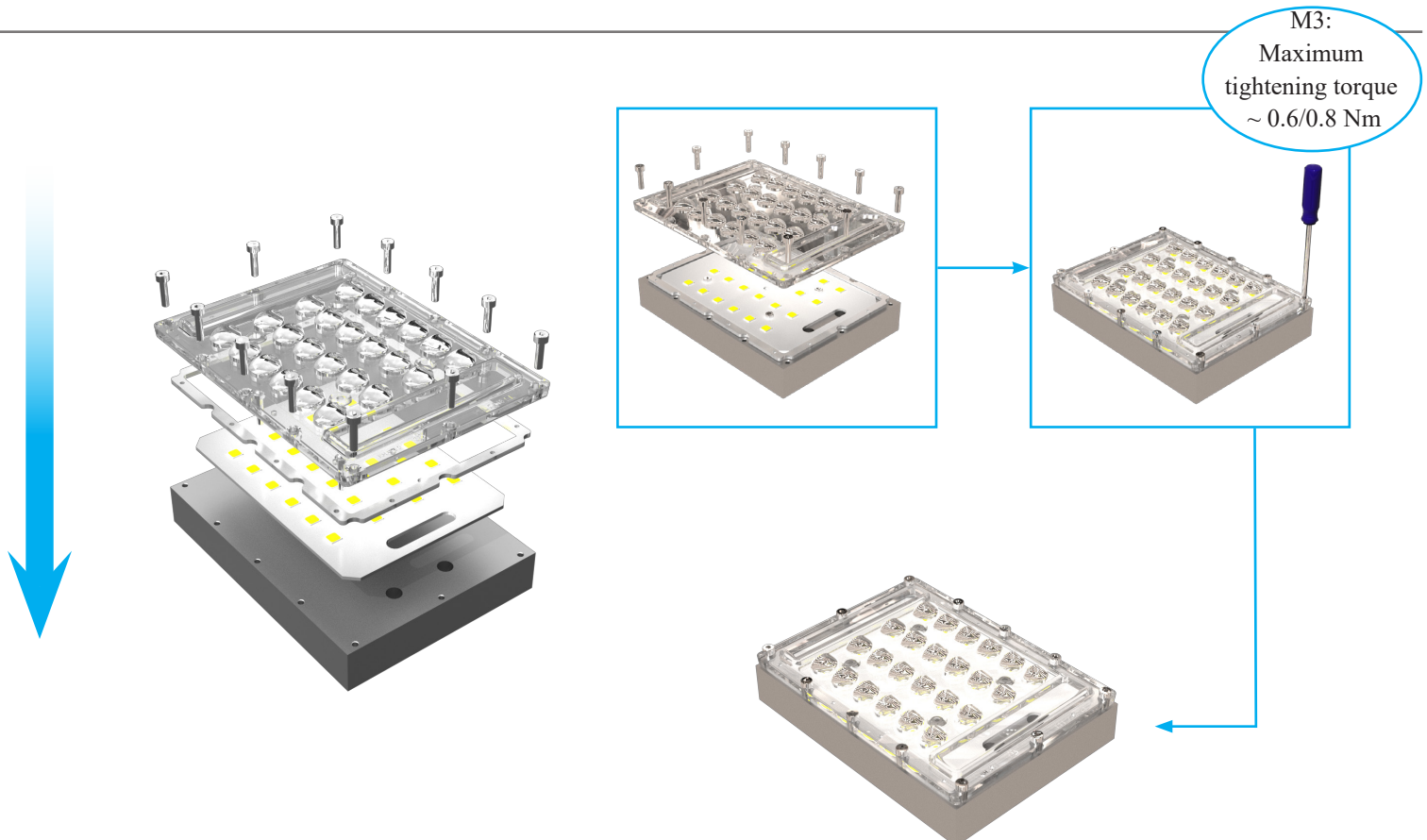
| | | | |
|---|-------------------|------|--------------|
| Tensile Strength | MPa | 9 | ASTM D 412 |
| Elongation | % | 620 | ASTM D 412 |
| Tear resistance | N/mm | 30 | ASTM D 624/B |
| Specific Gravity | g/cm ³ | 1.16 | ASTM D 297 |
| Brittleness Point | °C | | |
| TR-TEST TR10 | °C | | ASTM D 1329 |
| TR TEST TR-30 | °C | | |
| Compression Set 25% Temperature: 175°C @ 22h | % | 27 | ASTM D 395/B |

Assembly Specifications



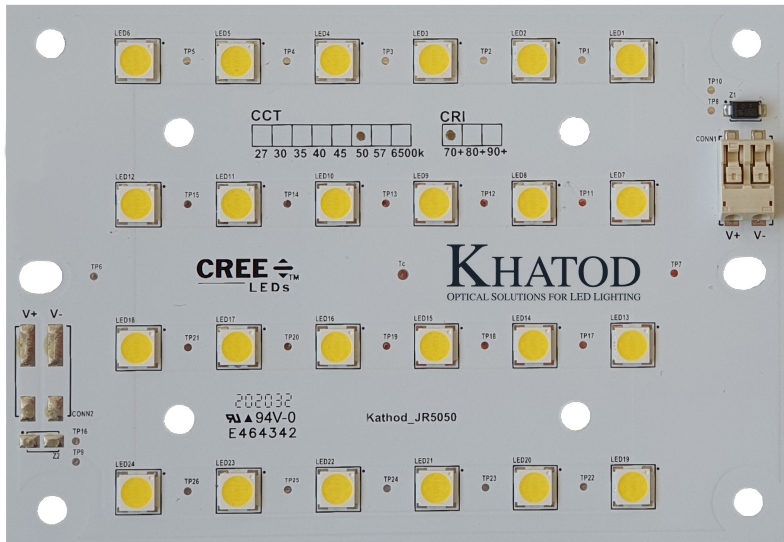
Use M3 TCEI screws

- M3: Maximum tightening torque ~ 0.6/0.8 Nm



PCB for Test - KFP50

Khatod supplies KFP50 PCBs to facilitate customers test.
Circuit diagrams and photos are shown below.



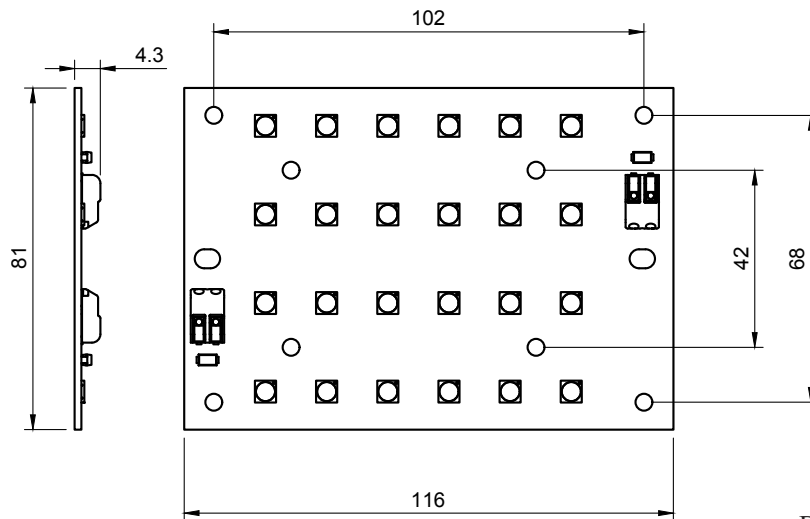
KFP50

36V @ 1600mA

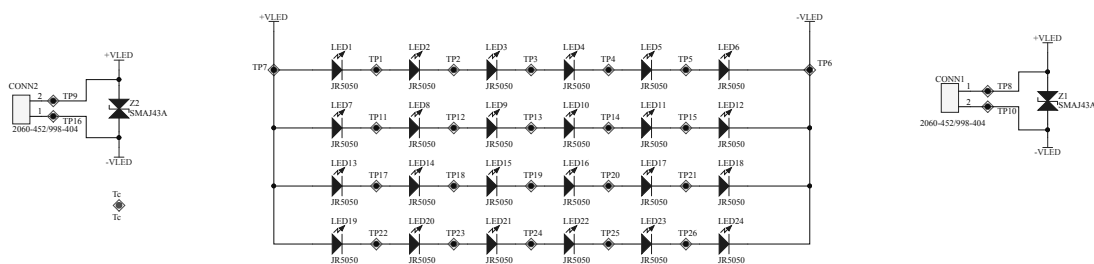
- CCT: 5000K
- CRI: 70
- Nominal Flux: 10.500 lumen
- Power: 55W

36V @ 3600mA

- CCT: 5000K
- CRI: 70
- Maximum Flux: 20.386 Lumen
- Power: 135W



Dimensions in mm



IK Test - Determination of Mechanical Impact Resistance Degree

Note

The present document is an internal document showing the tests carried out by Khatod in its laboratory. The tests, photos and videos presented in this document are made available for demonstration purposes only. Khatod, with its laboratory, is not a certification body. If customers need IK accredited certifications, they have to apply to the appointed Certification Bodies, under their sole care and responsibility.

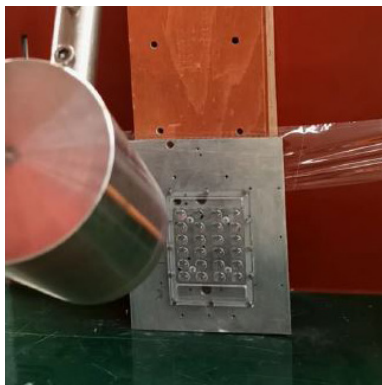
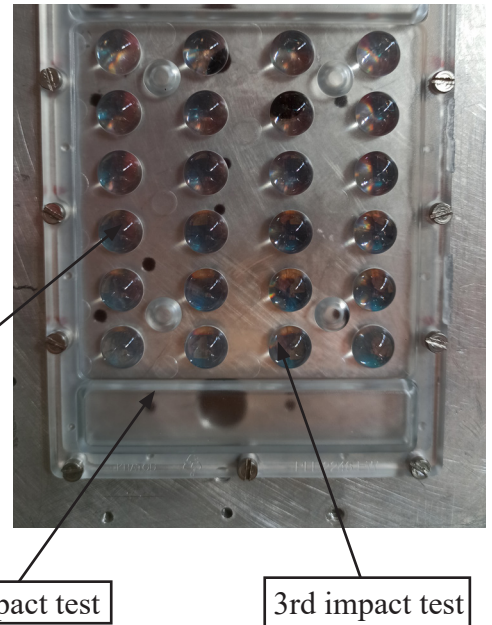
Initial Visual Inspection

- Before starting with testing, a visual inspection was performed in order to check the integrity of the part under test. The part resulted physically intact.

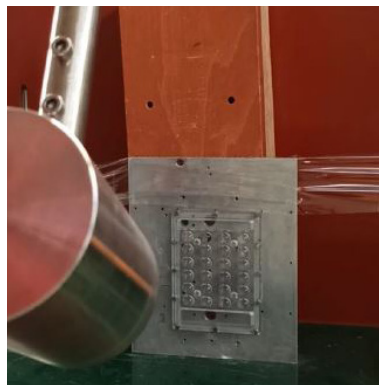
Tests Execution

Tests were carried out on the part under test according to IK10 (20 Joule)
Test parameters are as follows:

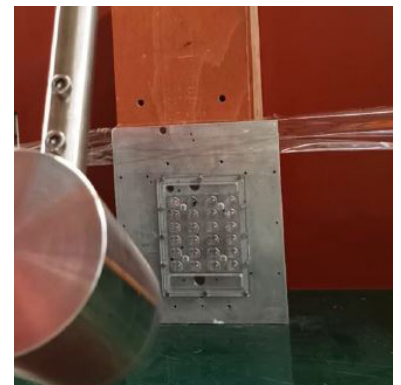
- Impact energy: 20 Joule
- Impacting element: 5.000 grams
- Distance between impacting element and the part under test: 40 cm
- Number of impacts: 5



1st TEST



2nd TEST



3rd TEST



Final Visual Inspection:
After testing, a final visual inspection was performed.
The result was positive. (view photo)

IP X5 Test

Note

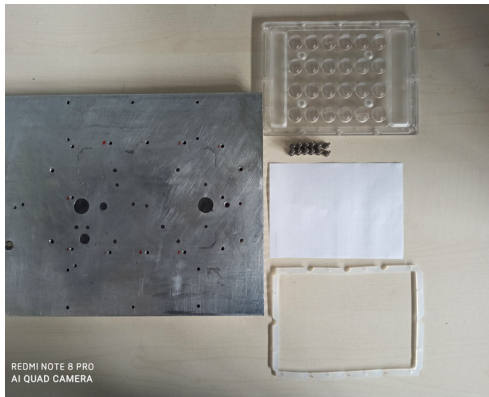
The present document is an internal document showing the tests carried out by Khatod in its laboratory. The tests, photos and videos presented in this document are made available for demonstration purposes only. Khatod, with its laboratory, is not a certification body.

If customers need IP accredited certifications, they have to apply to the appointed Certification Bodies, under their sole care and responsibility.

Data and Analysis

The sample has been subjected to the water-penetration resistance test as follows:

- Assembly of the components to test :
A moisture indicator paper sheet has been interposed between the lens and the clamping base
- Positioning of the assembled sample under the watering device with nozzle \varnothing 6.3 millimeters
- Water flow: 12.5 l/min \pm 5%
- Water pressure: 30 kPa @ distance of 3m
- Duration of water spraying test on the wrap surface per m^2 : 1 min
- Minimum duration of the test: 3 min
- Distance between the nozzle and the wrap surface: 2.5 Meters



PLL2248xx Assembled



Test Under Water Jet



Test Under Water Jet

Conclusion



As shown in the photo, the test paper sheet is completely dry after disassembling the system.

Based on the water penetration resistance test, polyurethane gasket proved to be fit for purpose.

The product has passed the Khatod test.

The test paper sheet is dry

Thermal shock resistance level



Initial Visual Inspection

Before starting with testing, a visual inspection was performed in order to check the integrity of the part under test.

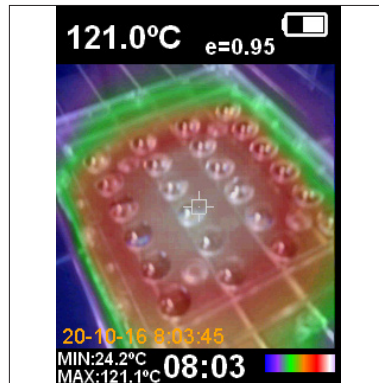
The part resulted physically intact.

The reference temperature of the component under test is 120° C.

Photo: the part in the climatic chamber.



Temperature set in the climatic chamber



Temperature detected on the part by IR thermal camera



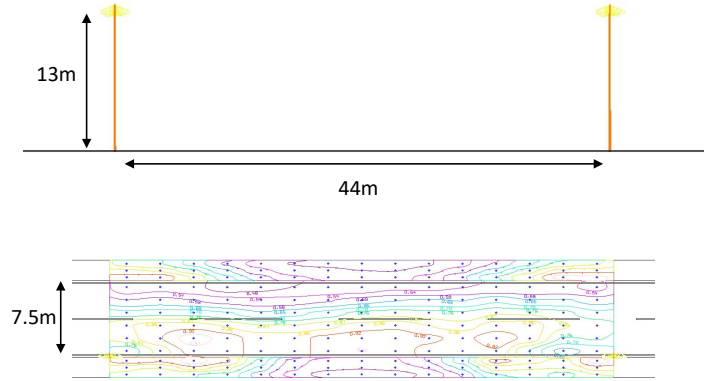
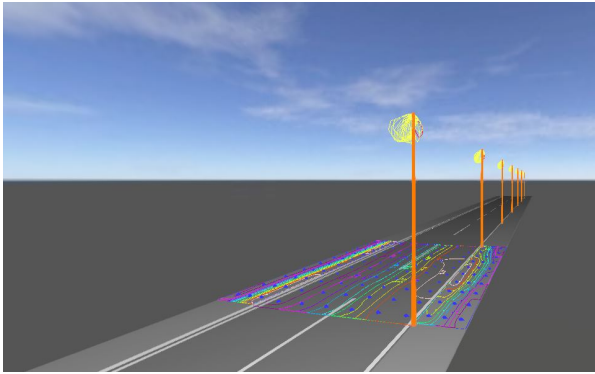
Final Visual Inspection

After testing, a final visual inspection was performed. The result was positive. (view photo)

Photo: the part in the climatic chamber after testing.

Based on the testing result, PLL2248xx test specimens proved to overcome the thermal stress test up to 120°C, without any physical deterioration of the material.

PLL2248AS - PLL2248AS180 - Street Lighting Examples with Dialux

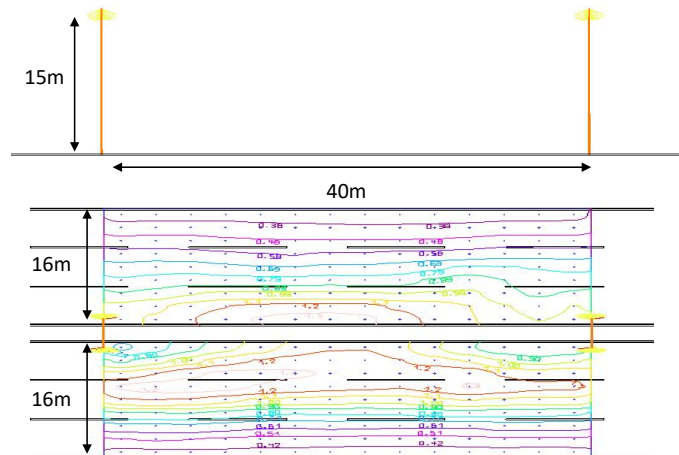
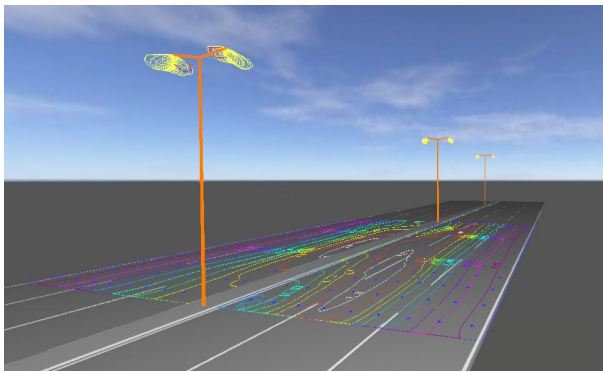


Street Type

Pole to pole distance: 44m
 Pole height: 13m
 Light overhang: 0
 Boom angle: 0
 Road width: 7.5m

Results

| | |
|-----------------------------|------------|
| Illuminance Class: Iesna M4 | Lm: 0.75 ✓ |
| LED: Osram Duris S8 | Uo: 0.61 ✓ |
| Luminous flux: 12500lm | Ui: 0.75 ✓ |
| | Ti: 9 ✓ |



Street Type

Pole to pole distance: 40m
 Pole height: 15m
 Light overhang: 1m
 Boom angle: 10°
 Road width: 16m

Results

| | |
|-----------------------------|------------|
| Illuminance Class: Iesna M4 | Lm: 0.75 ✓ |
| LED: Osram Duris S8 | Uo: 0.41 ✓ |
| Luminous flux: 16000lm | Ui: 0.79 ✓ |
| | Ti: 10 ✓ |

Application Examples



Packaging

| Item | Quantity | Total Parts | Size (L*W*H) | G.W. |
|--------------------------|--|-------------|--------------|---------|
| Multi-pocket plastic bag | 10 pieces per multi-pocket plastic bag | 10 pcs | 110*40 cm | 0.68 Kg |
| Outer Box | 30 multi-pocket plastic bags per Outer Box | 300 pcs | 50*32*39 cm | 21.3 Kg |



300 Lenses / Multi-pocket plastic bags



30 Multi-pocket plastic bags per Outer Box

Materials

| Material | Top |
|---|-----------------------|
| PC | -40°...120°C |
| PLL2248xx Temperature resistance: long-term | -40°...115°C |
| PLL2248xx Temperature resistance: short exposure | up to + 120 °C |

Notes:

- The optical values shown are the result of optical simulations carried out with LIGHTTOOLS, ASAP and ZEMAX software systems. The optical simulations are carried out on the basis of the typical values provided in the LED manufacturers' official datasheets. The photometric analysis has been carried out on physical samples.

Use and Maintenance

- DO NOT HANDLE OR INSTALL LENSES WITHOUT WEARING GLOVES, SKIN OILS MAY DAMAGE LENS OR LIGHT TRANSMISSION;
- CLEAN LENSES WITH MILD SOAP AND WATER AND A SOFT CLOTH;
- DO NOT USE ANY COMMERCIAL CLEANING SOLVENTS ON LENSES.

Disclaimer

Please note that flow lines and weld lines on the external surfaces of the lenses are acceptable if the optical performance of the lens is within the specifications.

Should you require further information, please contact Khatod for advice. All lens testing must be subject to identical conditions as Khatod test condition. Khatod Optoelectronic, Milan, Italy, manufactures lenses for LEDs. Any other use of the lens shall void our liability and warranty. The lenses are an inert component to be used in the manufacture of various products. Our warranty and liability are limited only to the manufacture of the lens. You may not modify, copy, distribute reproduce, license or alter the lens and related materials of Khatod. Khatod does not warrant against damages or defects arising out of the use or misuse of the products; against defects or damage arising from improper installation, or against defects in the product or in its components. No warranty of any kind, expressed or implied, is made regarding the safety of the products. The entire risk as to the quality or performance of the product is with the buyer. In no event shall Khatod be liable for any direct, indirect, punitive, incidental, special, consequential damages, or any damages whatsoever arising out of or connected with the use or misuse of the product. Khatod shall not have any obligation with respect to the product or any part thereof, whether based on contract, tort, strict liability or otherwise. Buyer assumes all risks and liability from use of the product. The laws of Milan, Italy govern this product warranty and liability and you hereby consent to the exclusive jurisdiction and venue of courts in Milan, Italy in all disputes arising out of or relating to the use of this product. Production, marketing, distribution, sale of these products as well as their possible modifications and variations are only exclusive right of Khatod Optoelectronic. No company can perform any of these actions without written permission released by Khatod Optoelectronic. The information contained in this document is proprietary of Khatod Optoelectronic and may change without notice.

REPRODUCTION PROHIBITED.