

Thermal shock resistance level with mechanical constraints



Initial Visual Inspection

Before starting the tests, a visual inspection was performed in order to check the integrity of the part. The part resulted physically intact. The reference temperature of the component under test is 90° C. The climate chamber work without umidity.

Photo: the part in the climatic chamber.

Temperature set in the climatic chamber



Temperature detected on the part by IR thermal camera

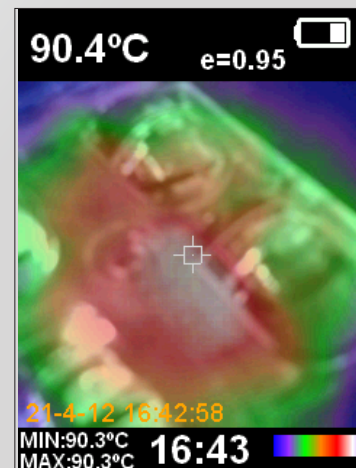


Photo: the part in the climatic chamber after testing.

Final Visual Inspection

After testing, a final visual inspection was performed. The result was positive (view photo).

Based on the testing result, KNAC04xxXSM test specimens proved to overcome the thermal stress test up to 90°C, without any physical deterioration of the material.