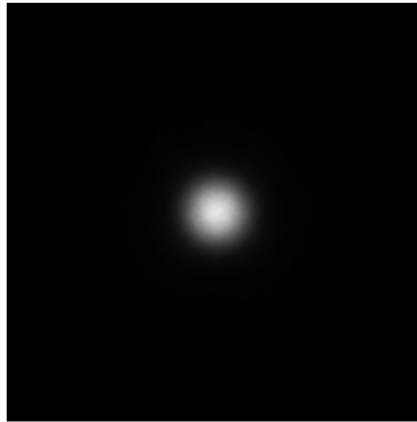
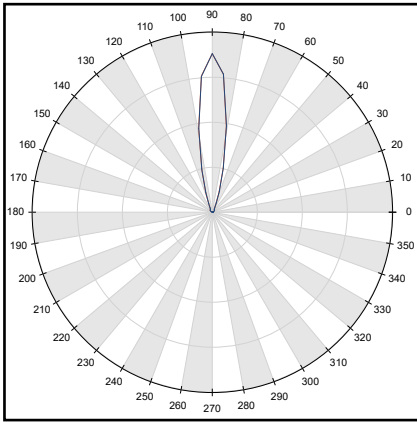
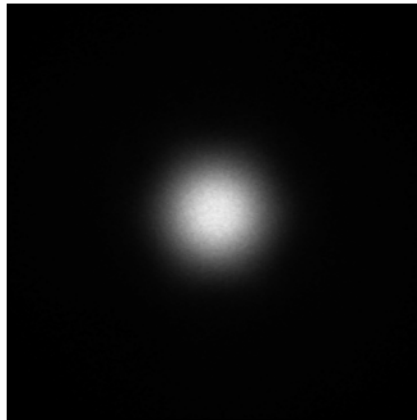
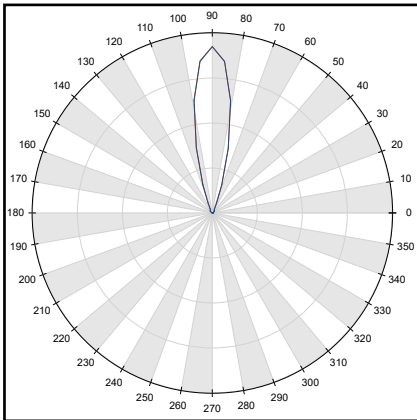


1. KESQ2145NASR - NICHIA® NVSU119CT(U405)



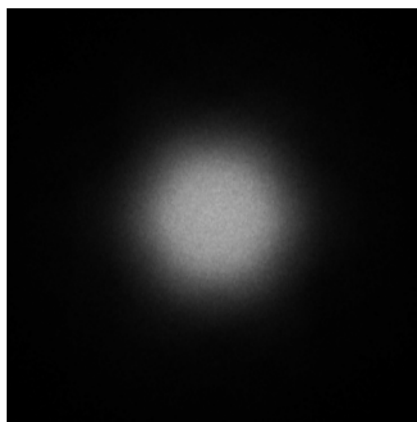
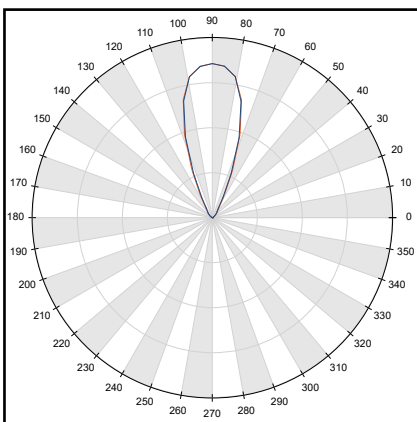
- Full angle C0-C180 at 50% from max: ~ 11.8°
- Full angle C0-C180 at 10% from max: ~ 22.4°
- The light spots here represented refer to tests carried out with ~ 1420mW@LED

1. KESQ2145MESR - NICHIA® NVSU119CT(U405)



- Full angle C0-C180 at 50% from max: ~ 22.9°
- Full angle C0-C180 at 10% from max: ~ 39.3°
- The light spots here represented refer to tests carried out with ~ 1420mW@LED

1. KESQ2145WISR - NICHIA® NVSU119CT(U405)



- Full angle C0-C180 at 50% from max: ~ 38.4°
- Full angle C0-C180 at 10% from max: ~ 60.6°
- The light spots here represented refer to tests carried out with ~ 1420mW@LED