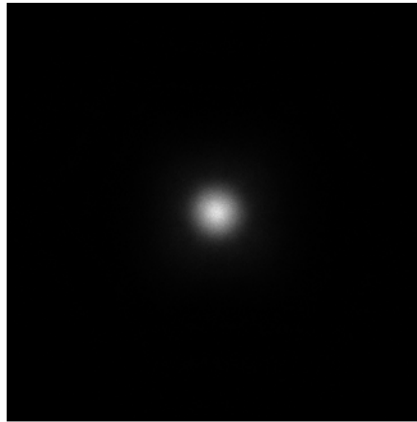
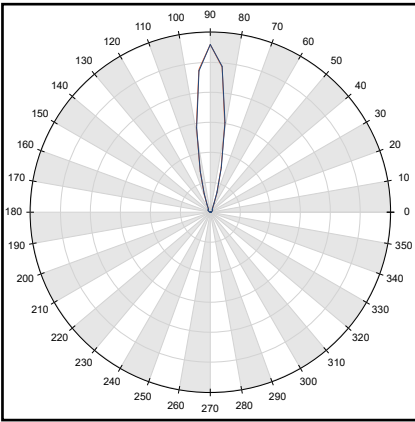
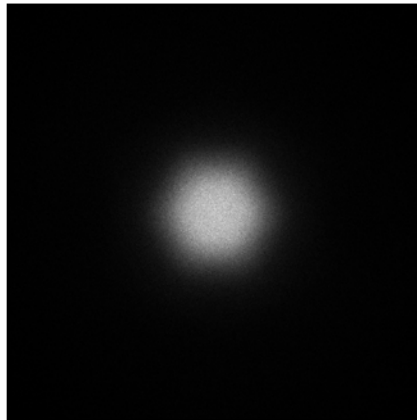
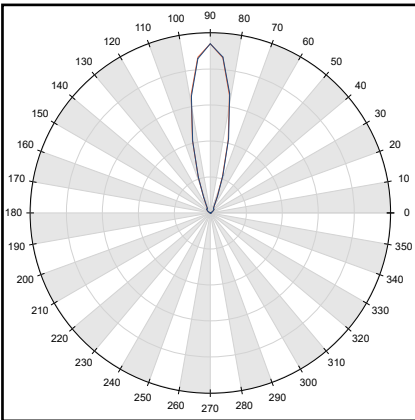


1. KESQ2145NASR - LG® UV-A_3535 Series



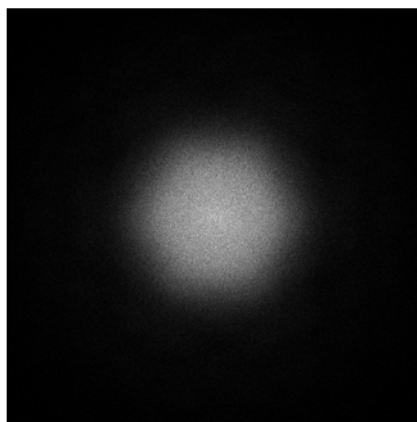
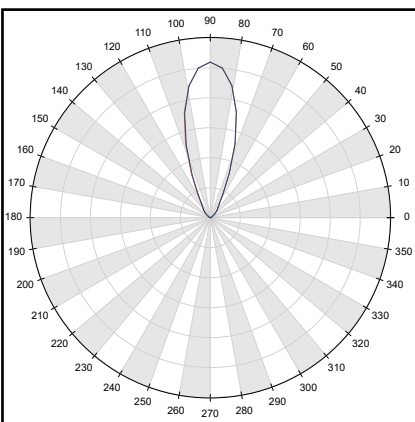
- Full angle C0-C180 at 50% from max: ~ 11.4°
- Full angle C0-C180 at 10% from max: ~ 23.8°
- The light spots here represented refer to tests carried out with ~ 1200mW@LED

1. KESQ2145MESR - LG® UV-A_3535 Series



- Full angle C0-C180 at 50% from max: ~ 24.7°
- Full angle C0-C180 at 10% from max: ~ 43.0°
- The light spots here represented refer to tests carried out with ~ 1200mW@LED

1. KESQ2145WISR - LG® UV-A_3535 Series



- Full angle C0-C180 at 50% from max: ~ 38.1°
- Full angle C0-C180 at 10% from max: ~ 62.4°
- The light spots here represented refer to tests carried out with ~ 1200mW@LED