

Via Monfalcone 41  
20092 Cinisello Balsamo (Milano) – Italy  
Tel. +39 0266013695 – Fax +39 0266013500

**CODE NUMBER: 120000001030**

**SUBJECT: KCLP1411A - Output Luminous Intensity Measurement**

---



- High lighting efficiency
- Made in PC for special coating treatment
- Excellent luminous flux
- Superior optical engineering for a perfect uniform light distribution
- Innovative design
- Easy fixing system to the PCB
- Complying with UL94 Specifications
- Innovative vacuum coating treatment, specific for optical reflector systems

### **Typical Applications:**

KCLP series is suitable for any application in Wide Area Lighting, Indoor and Outdoor:

- Industrial Lighting : Warehouses, Laboratories, Sheds, Garages, Machine Shops, etc.
- Indoor Lighting : Outlets & Shop Centers, Exhibition Areas, Offices, Hospital Wards, Elevators, , Passages, Aisles, etc.
- Outdoor Lighting : Parking Areas, Pathways, Petrol & Service Stations, Gardens, Playgrounds, Canopies, etc.
- Street Lighting : Streets, Walkways, Sidewalks, Bicycle Lanes, Squares, etc.
- Architectural lighting : Entertainment & Decorative, Shop Windows, Halls & Entrances, Lamps , etc.

Reflectors are of great importance in the Lighting Industry since they allow a wide variety of LED lighting applications. However, they need the most proper manufacturing technology for a perfect optical performance. The Optical Reflector Systems from Khatod assure the highest optical efficiency now available on the market. Based on the latest cutting-edge VACUUM COATING TECHNOLOGIES, our exclusive vacuum treatment plant is customized for specific optical treatments, projected and realized exclusively for the specific coating of optical reflectors for LED applications.

Always in the same spirit: 100% in- house, under our full control, from project to object, our aim is to deliver our customers the highest quality level.

Khatod Optics are basic elements to make your optical designs real.

The right optical solution is fundamental for type and number of LEDs used in your design.

Advanced research, scientific rigour, great attention to the continuous evolution in LED Technology, have led Khatod to develop optical solutions performing an excellent homogeneous luminous flux, and high lighting efficiency.

The product we are proposing is the result of Khatod's superior engineering. It helps in reducing the costs while meeting the most demanding lighting specifications and applications.

## **Contents**

|          |                                  |          |
|----------|----------------------------------|----------|
| <b>1</b> | <b>Light Source Model</b>        | <b>3</b> |
| <b>2</b> | <b>Measurement Setup</b>         | <b>3</b> |
| <b>3</b> | <b>Results</b>                   | <b>3</b> |
| <b>4</b> | <b>Intensity Plot</b>            | <b>4</b> |
| <b>5</b> | <b>Illuminance Map</b>           | <b>5</b> |
| <b>6</b> | <b>Isolux / Isocandela Plots</b> | <b>6</b> |
| <b>7</b> | <b>Illuminance Diagram</b>       | <b>7</b> |
| <b>8</b> | <b>Drawing</b>                   | <b>8</b> |
| <b>9</b> | <b>Use and Maintenance</b>       | <b>9</b> |

## 1 Light Source Model

| Parameter                      | Symbol | Value                             | Unit |
|--------------------------------|--------|-----------------------------------|------|
| Lens / Reflector Model         | -      | KCLP1411A                         | -    |
| Material (More info on page 9) | -      | PC, Aluminum + Reflective Coating | -    |
| Dimensions                     | -      | See page 8                        | -    |
| Source Model                   | -      | LUXEON M                          | -    |
| Number of Sources              | $N$    | 1                                 | -    |
| Power Supply Type              | -      | ISO TECH ISP3303                  | -    |
| Driver Type                    | -      | -                                 | -    |
| Driving Voltage                | $V_F$  | -                                 | V    |
| Driving Current                | $I_F$  | 700                               | mA   |
| Nominal Flux                   | $\Phi$ | 905 × 1                           | lm   |

## 2 Measurement Setup

| Parameter            | Symbol | Value        | Unit |
|----------------------|--------|--------------|------|
| Operator             | -      | Simone Bassi | -    |
| Goniophotometer Type | -      | KLX12M       | -    |
| Measurement Distance | $z$    | 5            | m    |
| Room Temperature     | $T$    | 25           | °C   |
| Date                 | -      | 19-Jun-2012  | -    |

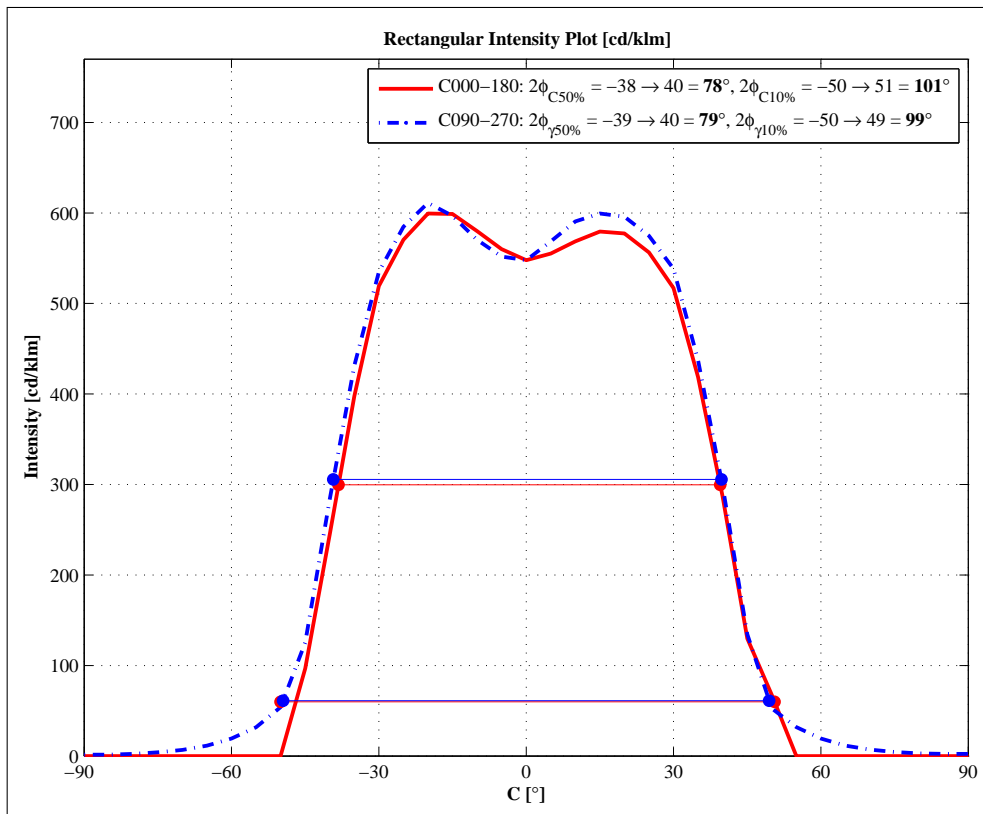
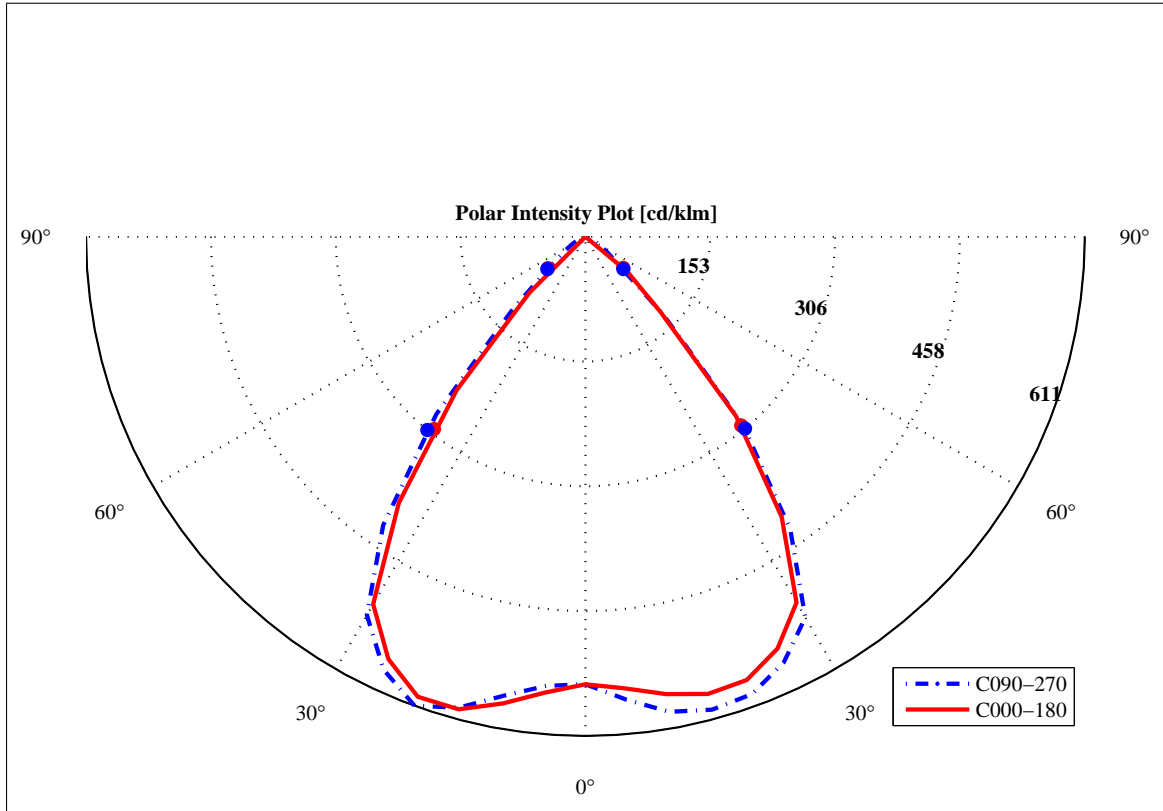
## 3 Results

| Parameter                                 | Symbol                  | Value | Unit |
|---|-------------------------|-------|------|
| Total Flux                                | $\Phi$                  | 905   | lm   |
| Max Intensity                             | $I_{\max}$              | 570   | cd   |
| Max Illuminance at 5 m                    | $E_{\max}$              | 21    | lx   |
| C-Viewing Angle at 50% $I_{\max}$         | $2\varphi_C$            | 78    | °    |
| $\gamma$ -Viewing Angle at 50% $I_{\max}$ | $2\varphi_\gamma$       | 79    | °    |
| C-Viewing Angle at 10% $I_{\max}$         | $2\varphi_{C10\%}$      | 101   | °    |
| $\gamma$ -Viewing Angle at 10% $I_{\max}$ | $2\varphi_{\gamma10\%}$ | 99    | °    |
| General Optical Measurement Tolerance     | -                       | ±10%  | -    |

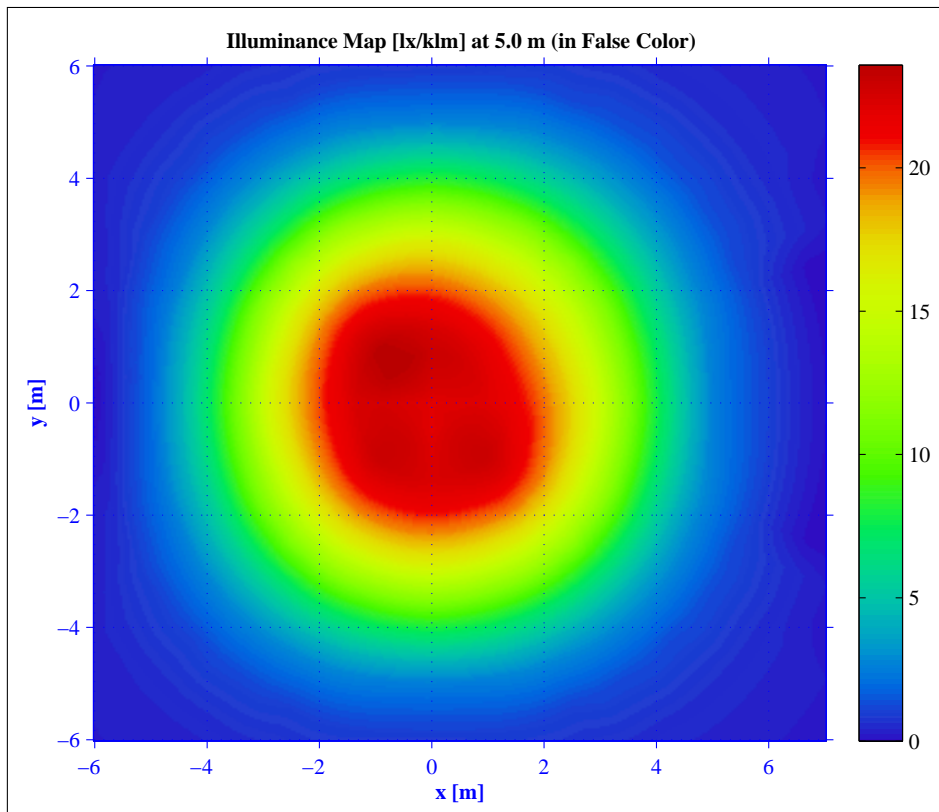
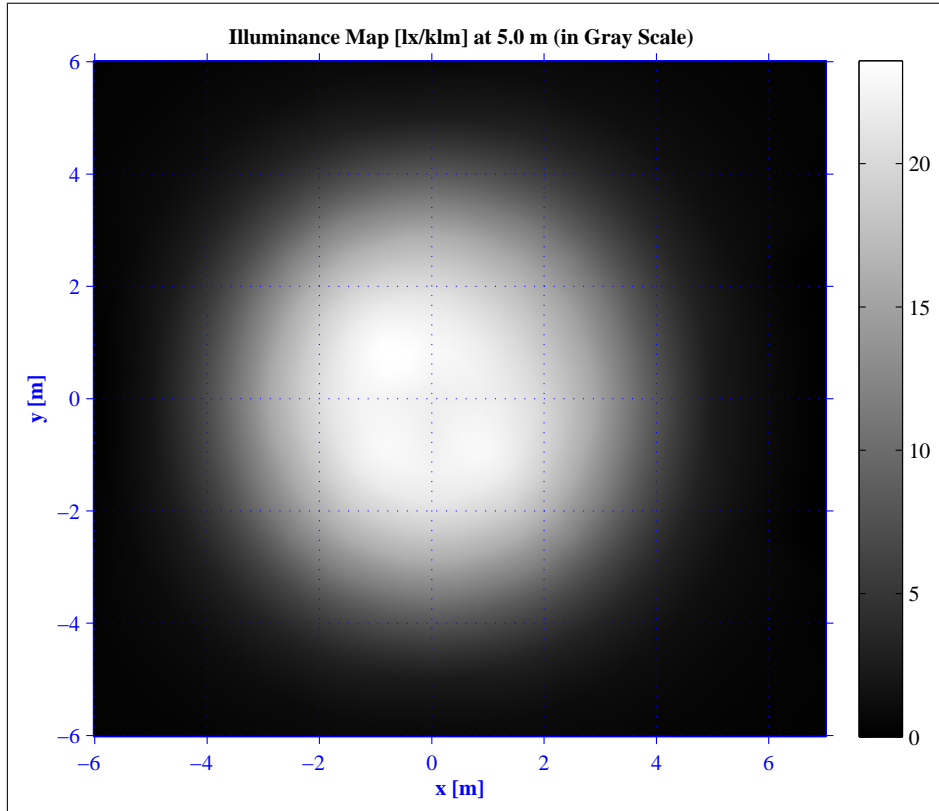
### NOTES:

- Intensity ( $I$ ) and illuminance ( $E$ ) data are normalized by 1000 lm

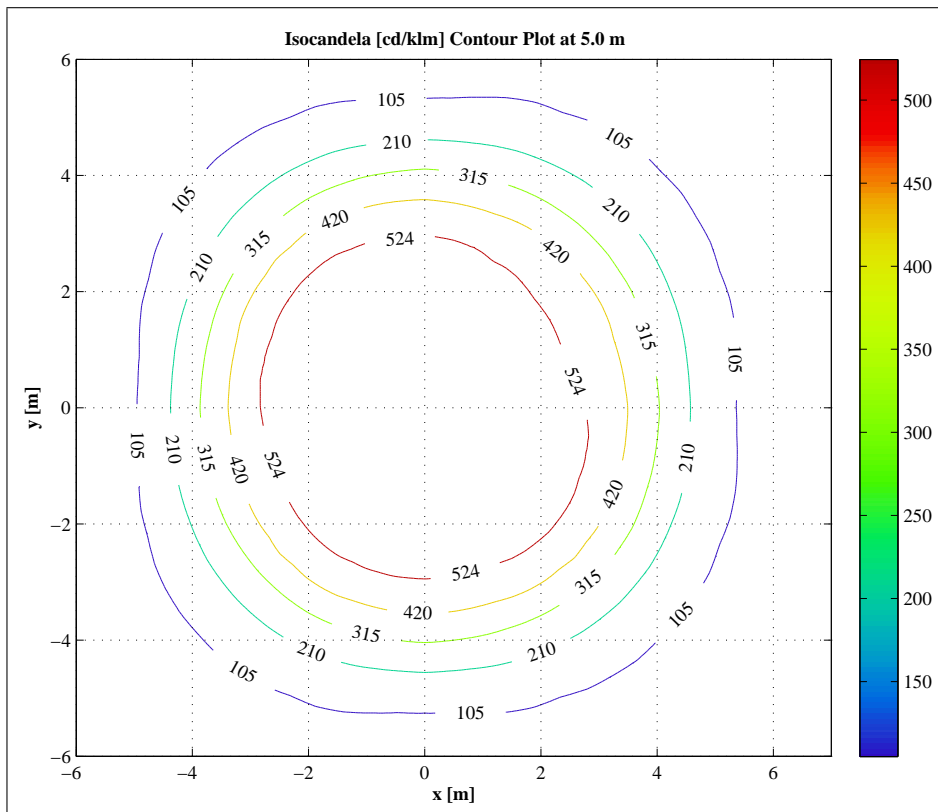
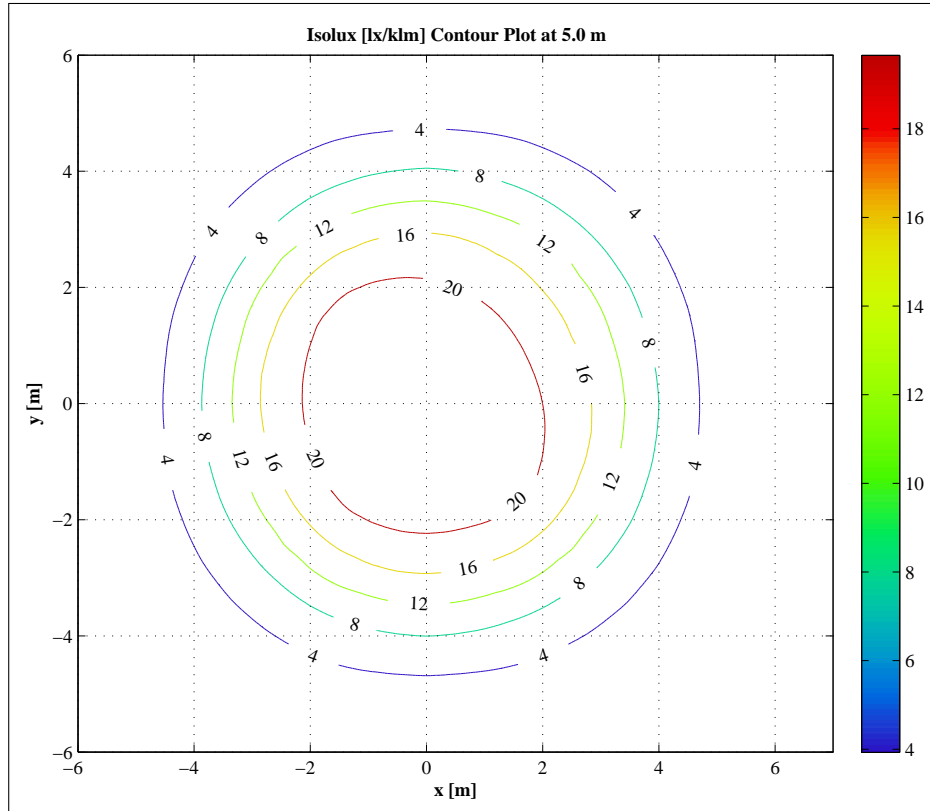
## 4 Intensity Plot



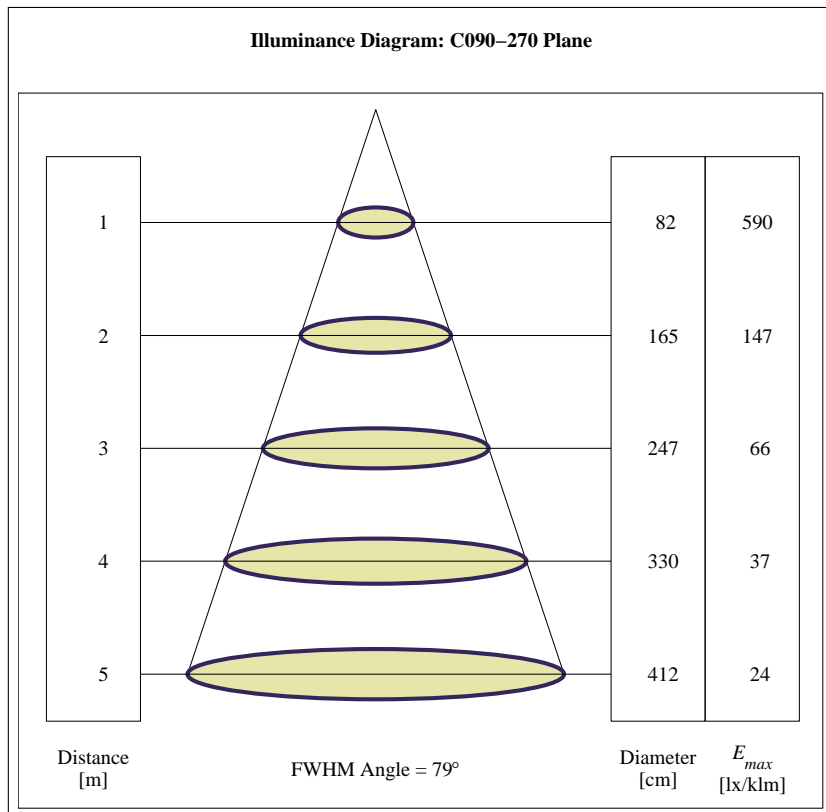
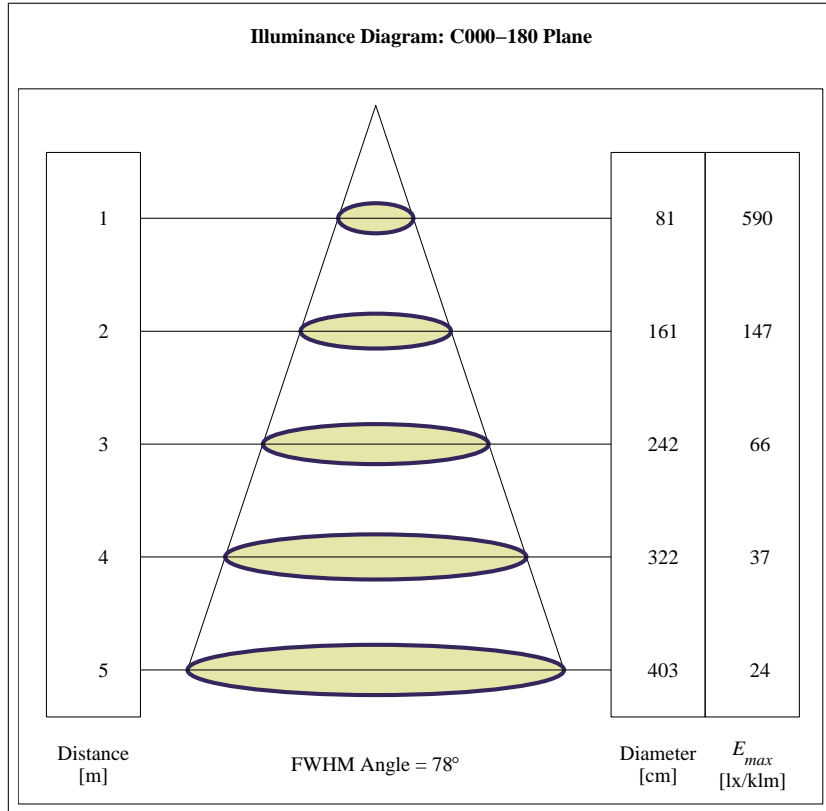
## 5 Illuminance Map



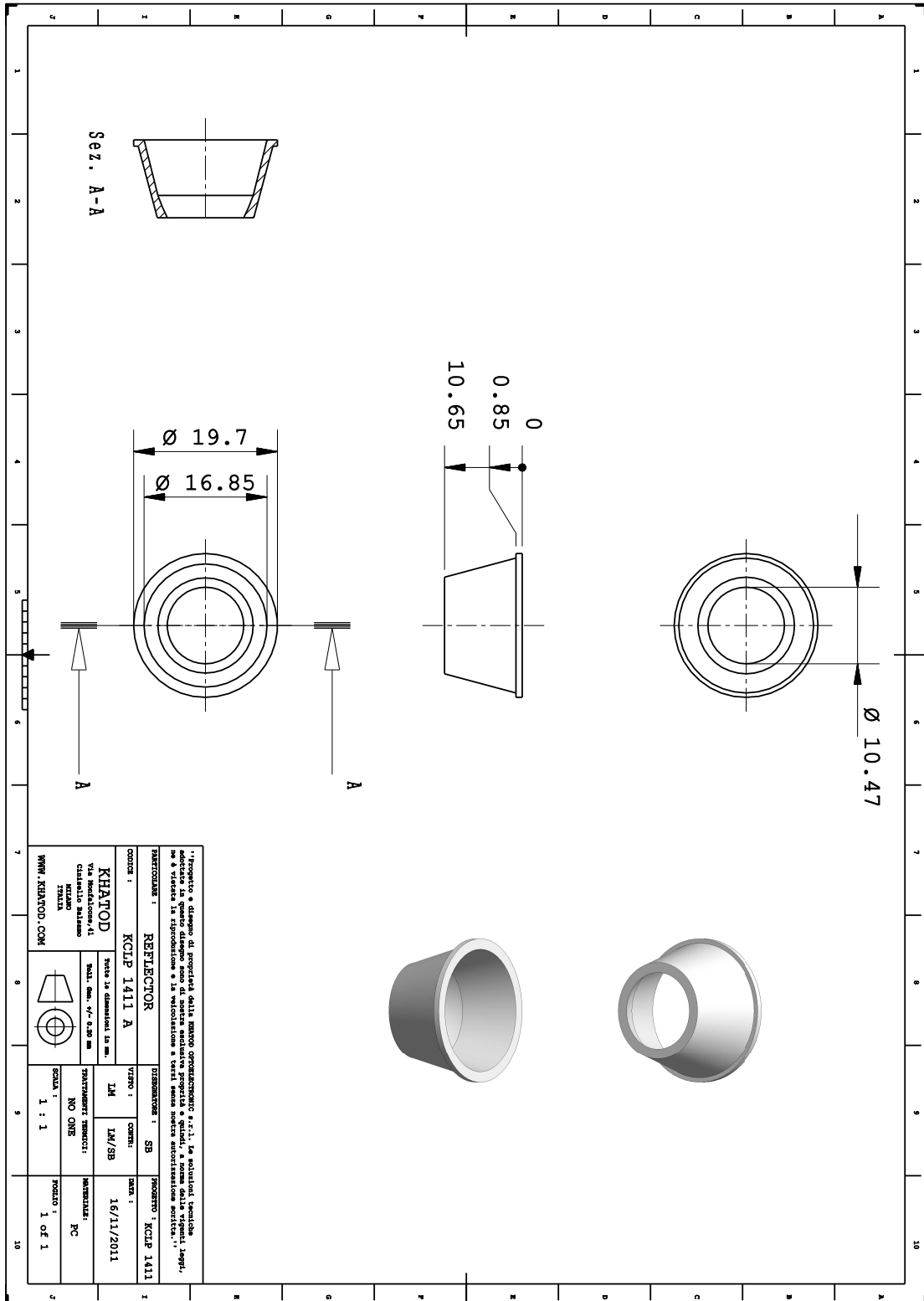
## 6 Isolux / Isocandela Plots



## 7 Illuminance Diagram



# 8 Drawing





## 9 Use and Maintenance

### Lens characteristics

| Parameter             | Symbol   | Rating      | Unit |
|-----------------------|--|-------------|------|
| Reflector Material    | PC , Aluminium Reflective Coating with protective clear coat | --          | --   |
| Holder Material       | --   | --          | --   |
| Operating Temperature | Topr   | -40 to +120 | °C   |
| Storage Temperature   | Tstg   | -40 to +120 | °C   |

### Notes:

Please note that flow lines and weld lines on the external surfaces of the lenses are acceptable if the optical performance of the lens is within the specification described in the section “OPTICAL CHARACTERISTICS”

- Should you require further information, please contact Khatod for advice.
- All lens testing must be subject to identical conditions as Khatod test condition.
- Published by Khatod optoelectronic srl - All the data contained in this document are the property of Khatod optoelectronic srl and may change without notice.

### **KHATOD LENS Use And Maintenance**

- DO NOT HANDLE OR INSTALL LENSES WITHOUT WEARING GLOVES, SKIN OILS MAY DAMAGE LENS OR LIGHT TRANSMISSION
- CLEAN LENSES WITH MILD SOAP AND WATER AND A SOFT CLOTH
- DO NOT USE ANY COMMERCIAL CLEANING SOLVENTS ON LENSES

Khatod SRL, Milan, Italy, manufactures lenses for LEDs. Any other use of the lens shall void our liability and warranty. The lenses are an inert component to be used in the manufacture of various products. Our warranty and liability are limited only to the manufacture of the lens. You may not modify, copy, distribute reproduce, license or alter the lens and related materials of Khatod SRL. Khatod SRL does not warrant against damages or defects arising out of the use or misuse of the products; against defects or damage arising from improper installation, or against defects in the product or in its components. No warranty of any kind, expressed or implied, is made regarding the safety of the products. The entire risk as to the quality or performance of the product is with the buyer. In no event shall Khatod SRL be liable for any direct, indirect, punitive, incidental, special, consequential damages, or any damages whatsoever arising out of or connected with the use or misuse of the product. Khatod SRL shall not have any obligation with respect to the product or any part thereof, whether based on contract, tort, strict liability or otherwise. Buyer assumes all risks and liability from use of the product. The laws of Milan, Italy govern this product warranty and liability and you hereby consent to the exclusive jurisdiction and venue of courts in Milan, Italy in all disputes arising out of or relating to the use of this product. Production, marketing, distribution, sale of these products as well as their possible modifications and variations are only exclusive right of Khatod Optoelectronic S.r.l. No company can perform any of these actions without written permission released by Khatod Optoelectronic S.r.l. - REPRODUCTION PROHIBITED -