

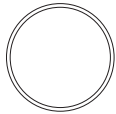
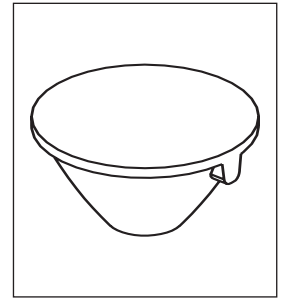
**Lenses for LAMINA® LEDs**

**PL097 Series**



**PL097 Series**

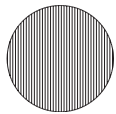
- ▶ Available in different beams
- ▶ High efficiency



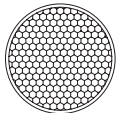
Part Number	Type	LED type	Degree
<b>PL 09706</b>	Narrow Beam	LAMINA® BL4000/Atlas	10



Part Number	Type	LED type	Degree
<b>PL 09725</b>	Medium Beam	LAMINA® BL4000/Atlas	25

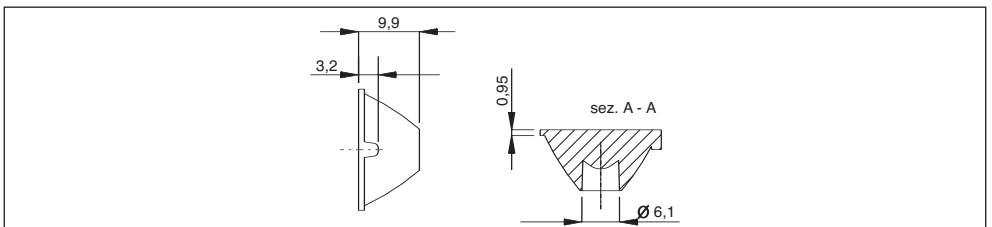


Part Number	Type	LED type	Degree
<b>PL 09740</b>	Elliptical Beam	LAMINA® BL4000/Atlas	15X90



Part Number	Type	LED type	Degree
<b>PL 09740W</b>	Wide Beam	LAMINA® BL4000/Atlas	40

For further information visit our web site: [www.khatod.com](http://www.khatod.com)



## Khatod Lens Use and Maintenance

- ▶ DO NOT HANDLE OR INSTALL LENSES WITHOUT WEARING GLOVES, SKIN OILS MAY DAMAGE LENS OR LIGHT TRANSMISSION
- ▶ CLEAN LENSES WITH MILD SOAP AND WATER AND A SOFT CLOTH
- ▶ DO NOT USE ANY COMMERCIAL CLEANING SOLVENTS ON LENSES

---

Khatod Optoelectronic Srl, Milan, Italy, manufactures lenses for LEDs. Any other use of the lens shall void our liability and warranty. The lenses are an inert component to be used in the manufacture of various products. Our warranty and liability are limited only to the manufacture of the lens. You may not modify, copy, distribute, reproduce, license or alter the lens and related materials of Khatod Optoelectronic Srl. Khatod Optoelectronic Srl does not warrant against damages or defects arising out of the use or misuse of the products; against defects or damage arising from improper installation, or against defects in the product or in its components. No warranty of any kind, expressed or implied, is made regarding the safety of the products. The entire risk as to the quality or performance of the product is with the buyer. In no event shall Khatod Optoelectronic Srl or Khatod USA be liable for any direct, indirect, punitive, incidental, special, consequential damages, or any damages whatsoever arising out of or connected with the use or misuse of the product. Khatod Optoelectronic Srl shall not have any obligation with respect to the product or any part thereof, whether based on contract, tort, strict liability or otherwise. Buyer assumes all risks and liability from use of the product. The laws of Milan, Italy govern this product warranty and liability and you hereby consent to the exclusive jurisdiction and venue of courts in Milan, Italy in all disputes arising out of or relating to the use of this product.